

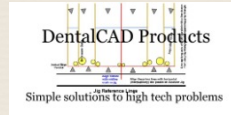
THE WHY

The course will discuss the clinical workflow required to enhance restorations produced via a CadCam system. Selecting the correct color is only one part of the equation where the sum of the components add up to a life-like restoration.

Knowing materials, preparations, designing, contours and texture allows one to be the illusionist. Making the inanimate appear alive



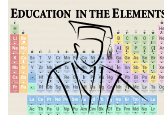
OUR SPONSORS



ABOUT THE INSTRUCTORS

Dr David Juliani is a General Dentist located in Rochester Hills Mi. He has been a Cerec Dentist since 2004 He is the Clinical Director for his DSO, coordinating the clinical care in the 150 member offices throughout the US. He is a basic and advanced trainer for Patterson Dental. He has been an alpha and beta tester for numerous dental material and technology companies

Dr Peter Gardell has been a Cerec User since 2004. He is a basic and advanced trainer for Patterson Dental. He has been an alpha and beta tester for numerous dental material and technology companies



EDUCATION IN THE ELEMENTS



IVOCLAR VIVADENT, INC.
Nationally Approved PACE Program
Provider for FAGD/MAGD credit.
Approval date does not imply acceptance by
any regulatory authority or AGD endorsement.
MAY 1, 2021 – MAY 31, 2024
Provider ID# 218958

CERAMIC Artistry

CHARACTERIZATION OF INDIRECT



Workflows for
Efficient
Esthetics

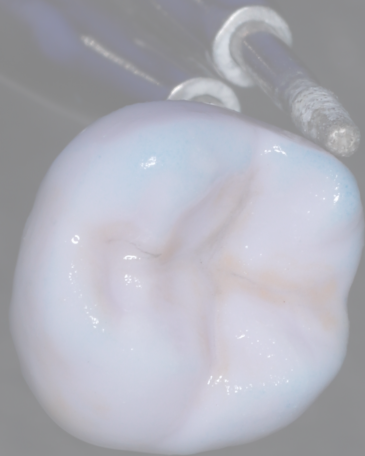


THE DETAILS

Dates

Dates

Please refer to website
for specific locations and
dates for the course



Tuition- \$1250.00

COURSE SYNOPSIS

The Curriculum will cover all phases of the Cad Cam process that are required to produce an esthetic chairside restoration. Preparations, properties of the ceramics and cements, contours and textures of the restoration are all critical parts that need to be considered when attempting to match the patients existing dentition.



TOPICS COVERED

Color Theory- Understanding how color works and how to use to your advantage

Translucency- Where it helps and where it is a liability

Polychromatic- Using chroma to your advantage to match nature

Preparation Design- Customizing your design improves the end product

Contouring- Deceiving the eye of the beholder with shape and texture

Color and Shadows- Enhancing the 3-D effect



Light Breakfast during registration and Lunch included

Register at:
EducationintheElements.com



Registration starts at 8:00am Day concludes at 3:30

Participants will earn 6 CE hours for their attendance